

# CAPM BDBL Mutual Fund 01

## (CAPMBDBLMF)



Your Partner for Dynamic Performance

## Fact Sheet

NAV per Unit at Cost Value

BDT. 11.53

NAV per Unit at Market Value

BDT. 10.84\*

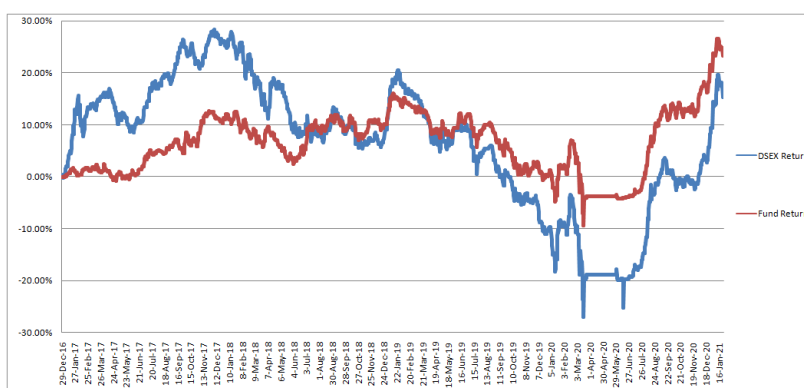
### Investment Objective

To achieve regular disbursement of better dividend to unit holders with capital appreciation benefits in long-term through investments in equity and debt related securities of Bangladesh Capital Market.

### Basic Information

Fund Name	CAPM BDBL Mutual Fund 01
Fund Type	Income
Fund Nature	Closed-End
Fund Size	BDT 50.13 Crore
Face Value per Unit	BDT 10.00
Trustee	Investment Corporation of Bangladesh
Custodian	Investment Corporation of Bangladesh
Sponsor	Bangladesh Development Bank Limited
Manager	CAPM (Capital & Asset Portfolio Management) Company Ltd.
Auditor	Pinaki & Co.

### Performance of the Fund Since December 2016



### Historical NAV Per Unit at Market Value

Particulars	1 Month	1 Year	Since Inception
Historical High (BDT)	11.02	11.02	11.05
Historical Low (BDT)	10.48	7.89	7.89

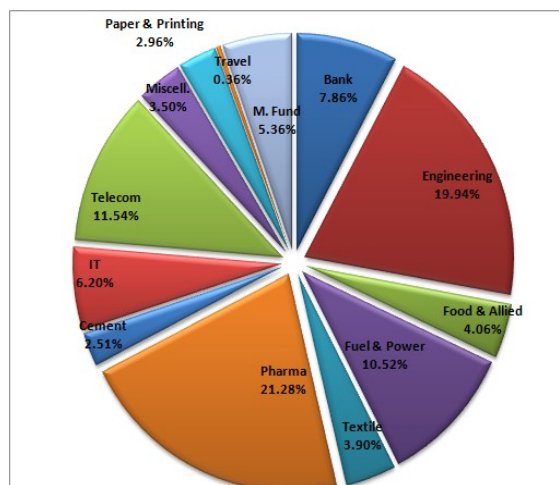
### Asset Allocation

Stocks and Mutual Funds	80.07%
Cash and Cash Equivalents	10.23%
Fixed Income Securities	9.70%

### Fund Portfolio Statistics

Fund Beta	0.40
Equity Investment Beta	1.64
Sharpe Ratio (Fund)	0.86
Sharpe Ratio (Equity)	0.57
Annual Standard Deviation (Fund)	9.33%
Annual Standard Deviation (Equity)	14.06%
Expense Ratio (YTD)	0.76%

### Sector Composition (Stock & Mutual Fund)



### Top 10 Holdings\*\*

BPML
CITYBANK
DOREENPWR
GP
ICBAGRANI1
IFADAUTOS
MJLBD
NTC
QUASEMIND
SINGERBD

## General Disclosure

All rights reserved by CAPM (Capital & Asset Portfolio Management) Company Limited.

This document is intended to be of general interest only and does not constitute legal or tax advice nor is it an offer for BUY or invitation to BUY units of the CAPM BDBL Mutual Fund 01 (CAPMBDBLMF). Nothing in this document should be construed as investment advice.

The value of units of the fund and income received from it can go down as well as up, and investors may not get back the full amount invested. Past performance is not an indicator or a guarantee of future performance.

An investment in CAPMBDBLMF entails risks, which are described in the fund's prospectus. Special risks may be associated with the fund's investment in certain types of securities, asset classes, sectors, markets, currencies or countries.

Top Holdings represent the largest holdings of the fund as of the date indicated. These securities do not represent all of the securities purchased, sold or recommended for clients, and the reader should not assume that investment in the securities listed was or will be profitable.

Please contact CAPM Company Limited if you require any further information about the fund.

## Risk Factors

Because the Fund is being invested primarily in equities of companies across sectors, it may experience greater volatility than a more diversified fund. Securities risks include economic and political uncertainties. Investments in capital market instruments are subject to a higher degree of market risk. The Fund may be subject to a variety of risks in addition to those described herein. Please read the Prospectus for a full discussion

## Contact Information

### Hot Lines

01847-054877, 01847-054888

### E-mail

contact@capmbd.com

### Website

www.capmbd.com

## Investment Management Team

Name	Designation	E-mail
Mahmud Hussain, CFA	Managing Director & CEO	ceo@capmbd.com
Chandan Wasif	Vice President	chandan@capmbd.com
Md. Abdul Momin Saffat	Associate	saffat@capmbd.com

\*based on current fund size

\*\*in alphabetical order